



UNIVERSITY OF SOUTH ALABAMA

Fall 2021 Student Perceptions of Instruction: Response Rates by College and University Overall

Report by Michaela Rader
Office of Institutional Effectiveness

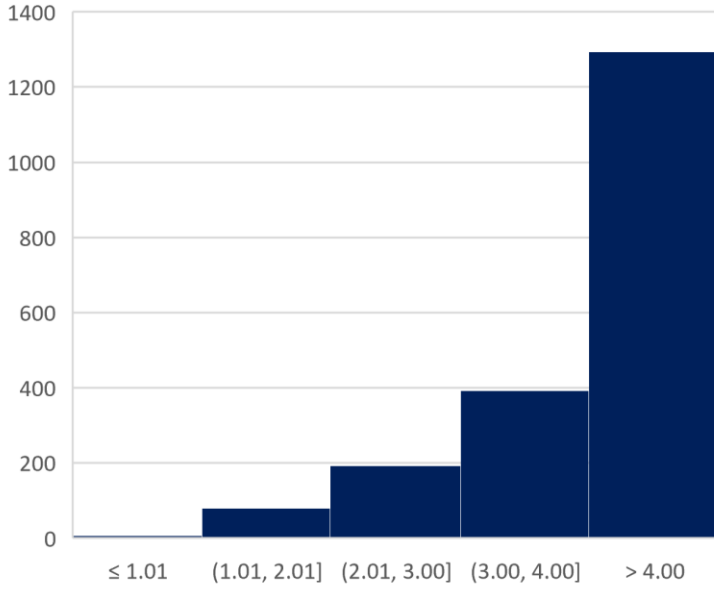
Purpose

The purpose of this report is to provide a quick and concise presentation of response rates and scores for student perceptions of instruction (SPIs) by college for fall 2021. The document contains histograms displaying the distribution of scores for each college, as well as the university's overall score and response rate (53%). Also listed are overall means, standard deviations (SD), and medians for each college.

Calculations

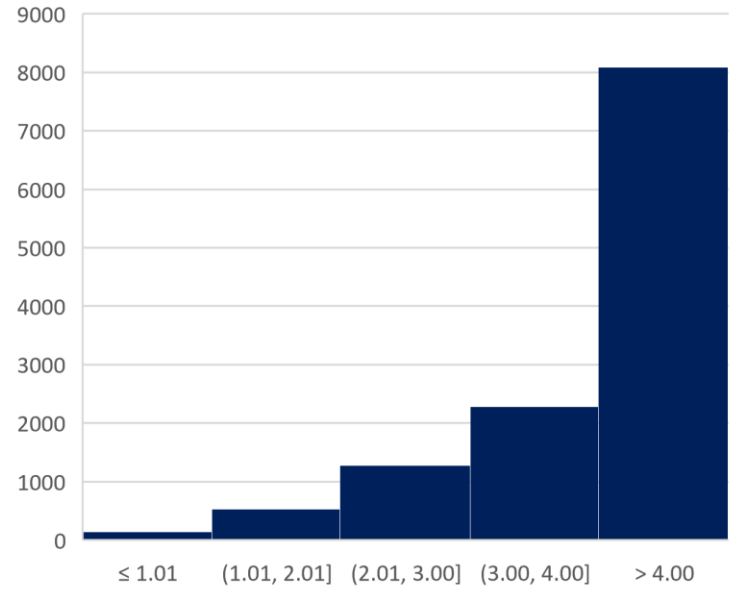
For each college, scores were averaged across items to indicate an overall mean score for each response. Then, histograms were created to display the distribution of overall mean scores for each college. Because items were averaged, and resulting scores were not whole numbers, the distributions graphs scores are in-between typical scores of 1-5 (Scale: 5 = Excellent, 4 = Very Good, 3 = Good, 2 = Fair, 1 = Poor). Therefore, the resulting labels indicate the number of scores with values of 1, 1.01 to 2, 2.01 to 3, 3.01 to 4, and 4.01 to 5.

Table 1: Allied Health Professionals Overall



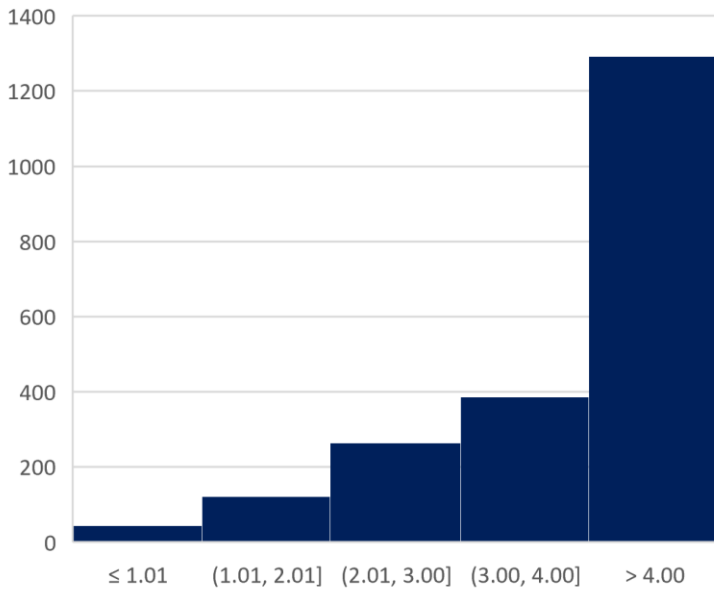
Mean	SD	Median	Response Rate (%)
4.29	0.96	4.82	38

Table 2: College of Arts and Sciences Overall



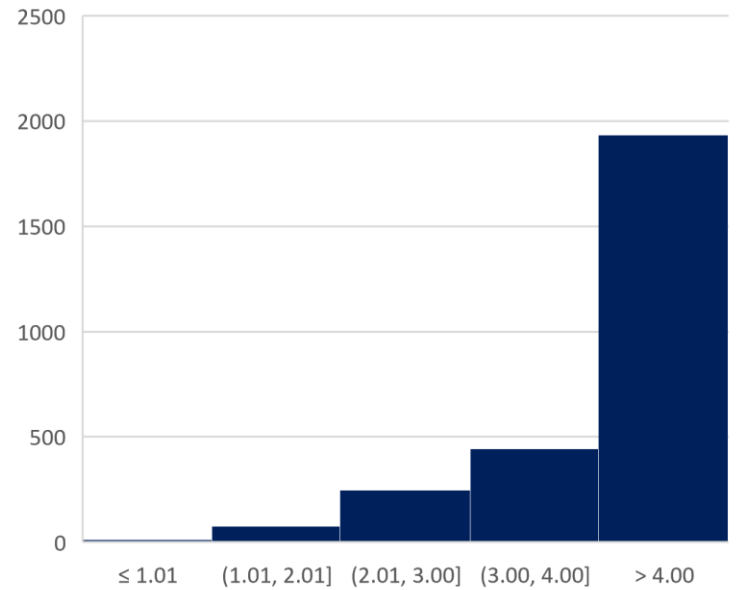
Mean	SD	Median	Response Rate (%)
4.24	1.01	4.82	52

Table 3: College of Business Overall



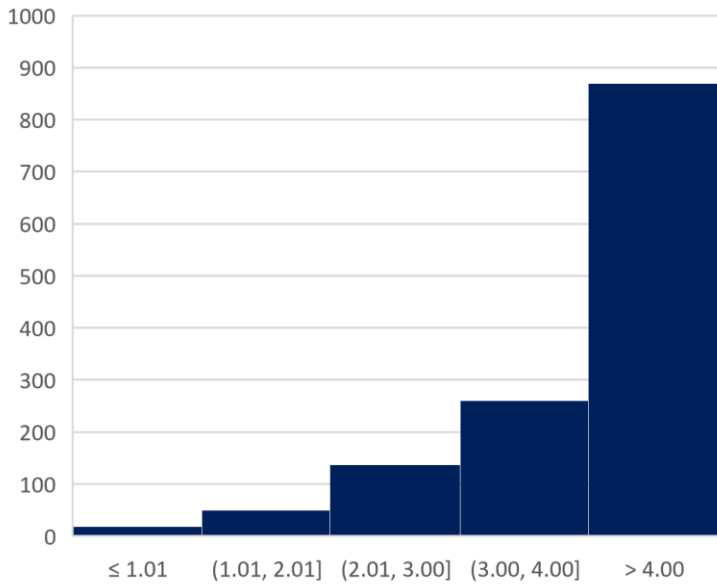
Mean	SD	Median	Response Rate (%)
4.12	1.11	4.64	52

Table 4: Education/Professional Studies Overall



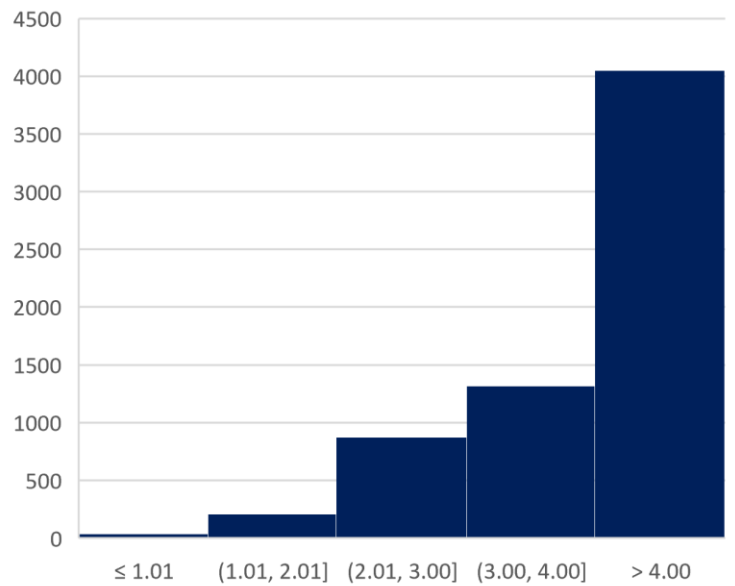
Mean	SD	Median	Response Rate (%)
4.39	0.90	5.00	54

Table 5: College of Engineering Overall



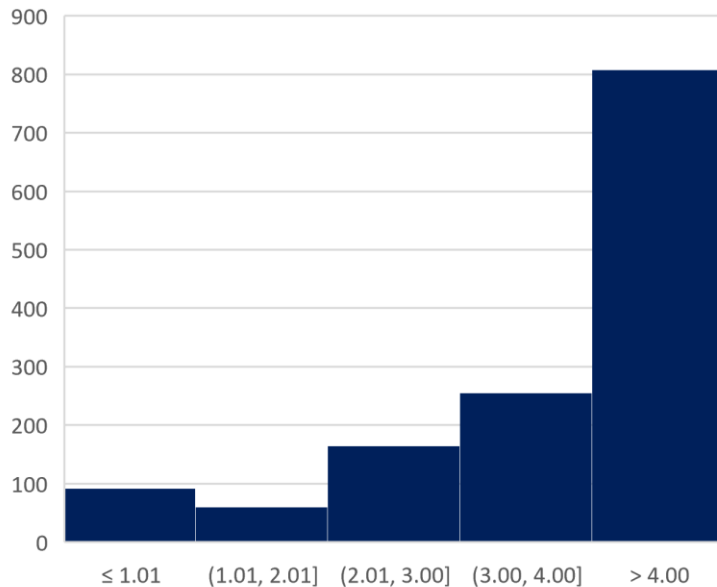
Mean	SD	Median	Response Rate (%)
4.25	0.99	4.82	57

Table 6: College of Nursing Overall



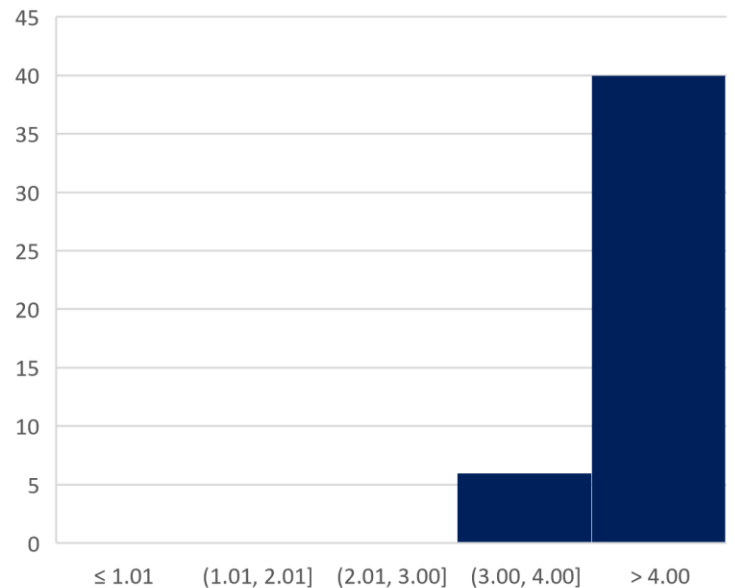
Mean	SD	Median	Response Rate (%)
4.25	0.96	4.82	62

Table 7: School of Computing Overall



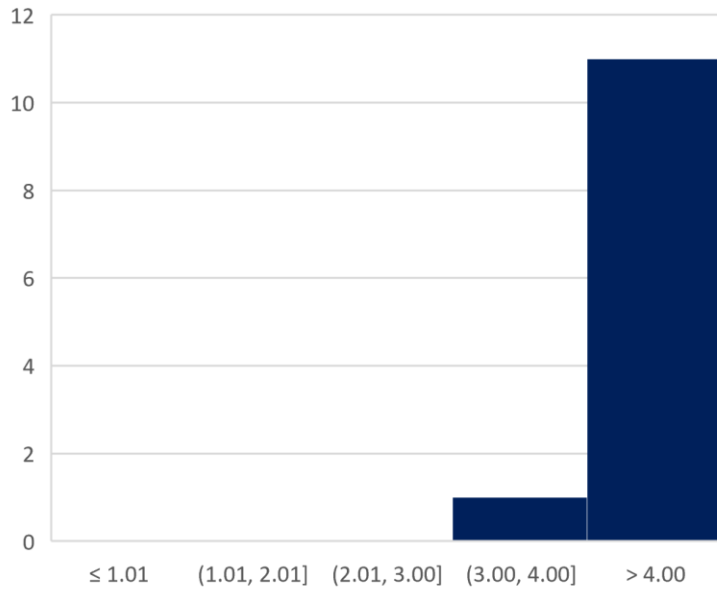
Mean	SD	Median	Response Rate (%)
4.18	1.12	5.00	57

Table 8: The Graduate School Overall



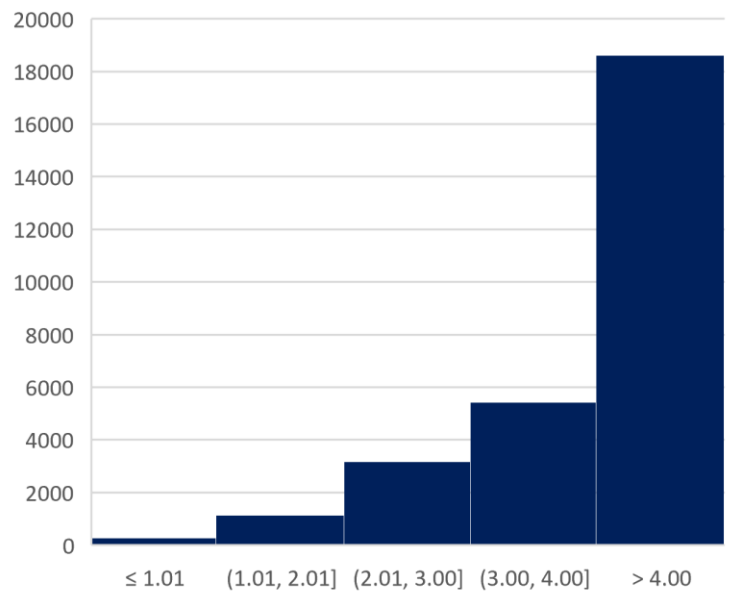
Mean	SD	Median	Response Rate (%)
4.81	0.41	5.00	52

Table 9: Honors College Overall



Mean	SD	Median	Response Rate (%)
4.73	0.39	5.00	32

Table 10: University Overall



Mean	SD	Median	Response Rate (%)
4.25	0.99	4.82	53